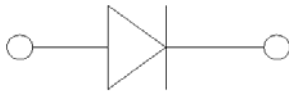
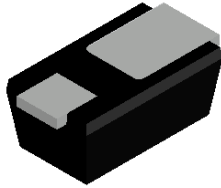
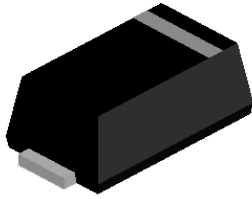


## Surface Mount Schottky Rectifier



### Features

- Low profile package
- Ideal for automated placement
- Guardring for overvoltage protection
- Low power losses, high efficiency
- High forward surge capability
- Meets MSL level 1, per J-STD-020, LF maximum peak of 260 °C

### Typical Applications

For use in low voltage high frequency inverters, freewheeling, DC/DC converters, and polarity protection applications.

### Mechanical Date

- **Package:** SOD-323HE  
Molding compound meets UL 94 V-0 flammability rating, RoHS-compliant, halogen-free
- **Terminals:** Tin plated leads, solderable per J-STD-002 and JESD22-B102
- **Polarity:** Cathode line denotes the cathode end

### ■Maximum Ratings (T<sub>a</sub>=25°C Unless otherwise specified)

PARAMETER	SYMBOL	UNIT	FM12E	FM13E	FM14E	FM15E	FM16E	FM18E	FM110E	FM115E	FM120E
Device marking code			12	13	14	15	16	18	110	115	120
Repetitive peak reverse voltage	VRRM	V	20	30	40	50	60	80	100	150	200
Average rectified output current @60Hz sine wave, Resistance load, TL (FIG.1)	I <sub>O</sub>	A	1.0								
Surge(non-repetitive)forward current @60Hz half-sine wave,1 cycle, T <sub>j</sub> =25°C	I <sub>FSM</sub>	A	30								
Storage temperature	T <sub>stg</sub>	°C	-55 ~+175								
Junction temperature	T <sub>j</sub>	°C	-55 ~+125				-55 ~+175				

### ■Electrical Characteristics (T<sub>a</sub>=25°C Unless otherwise specified)

PARAMETER	SYMBOL	UNIT	TEST CONDITIONS	FM12E	FM13E	FM14E	FM15E	FM16E	FM18E	FM110E	FM115E	FM120E
Maximum instantaneous forward voltage drop per diode	V <sub>F</sub>	V	I <sub>FM</sub> =1.0A	0.50			0.70	0.85		0.90		
Maximum DC reverse current at rated DC blocking voltage per diode @ VRM=VRRM	I <sub>RRM</sub>	mA	T <sub>a</sub> =25°C	0.50				0.10				
			T <sub>a</sub> =100°C	10				5				

Note1:Pulse test:300uS pulse width,1% duty cycle

Note2:Pulse test:pulse width 40mS



# FM12E THRU FM120E

## ■ Thermal Characteristics ( $T_a=25^\circ\text{C}$ Unless otherwise specified)

PARAMETER	SYMBOL	UNIT	FM12E	FM13E	FM14E	FM15E	FM16E	FM18E	FM110E	FM115E	FM120E
Thermal Resistance	R $\theta$ J-A	$^\circ\text{C}/\text{W}$	270								
	R $\theta$ J-L		45								

## ■ Characteristics (Typical)

FIG1: I<sub>o</sub>-T<sub>L</sub> Curve

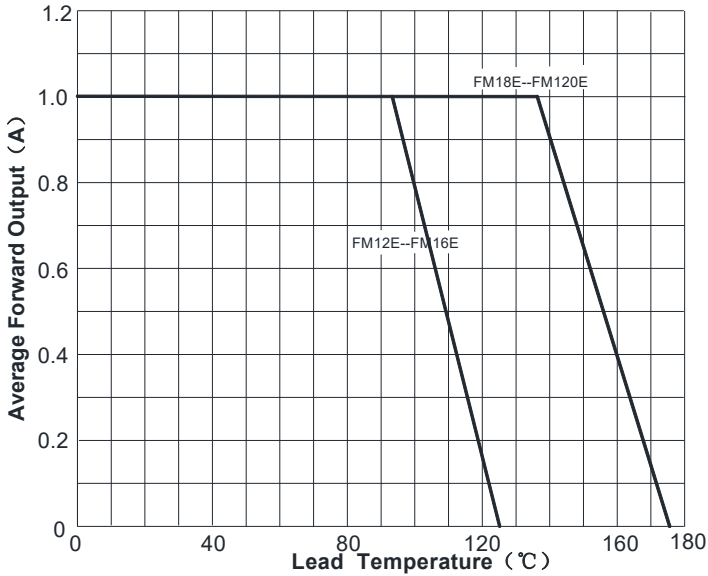


FIG2: Surge Forward Current Capability

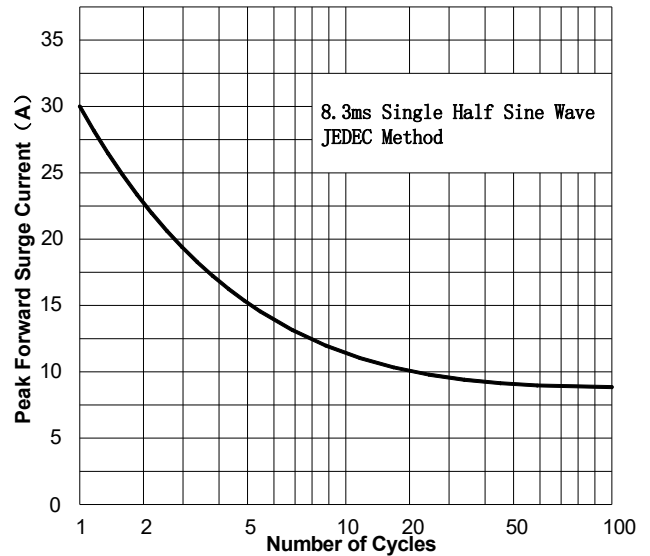


FIG3: Forward Voltage

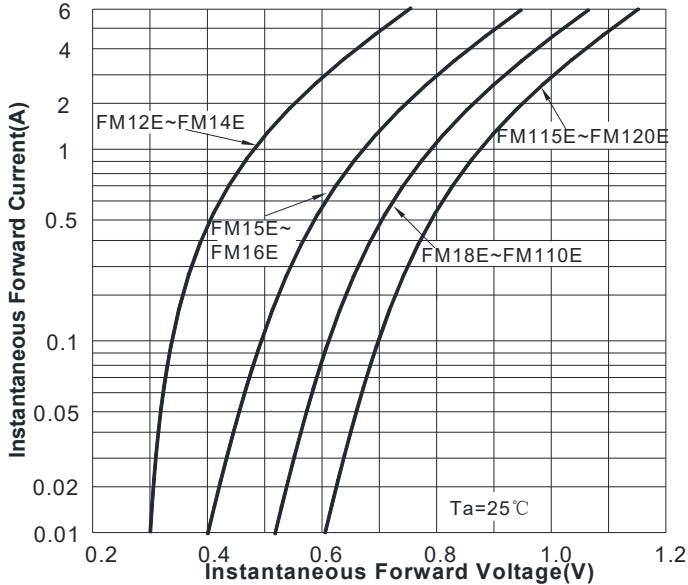
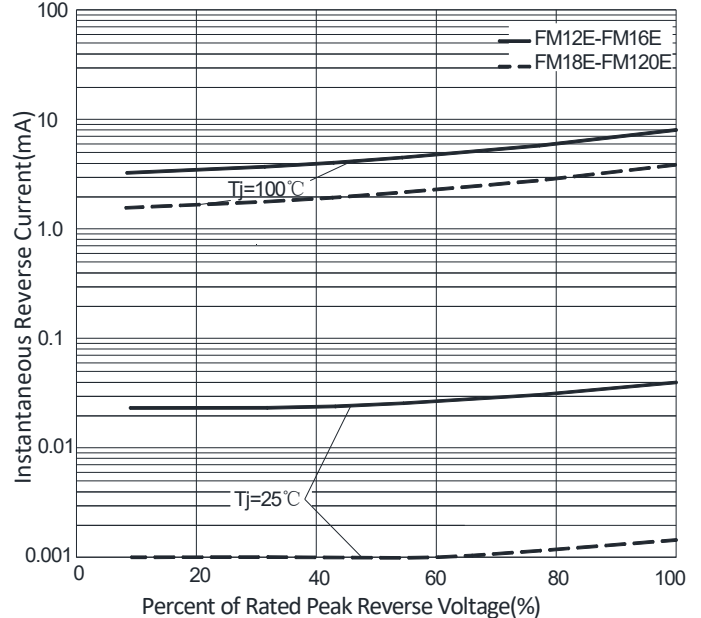


FIG4: Typical Reverse Characteristics



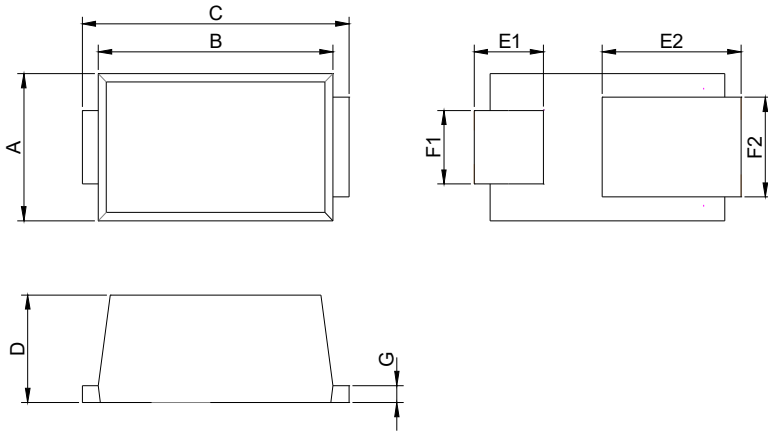


# FM12E THRU FM120E

## Ordering Information (Example)

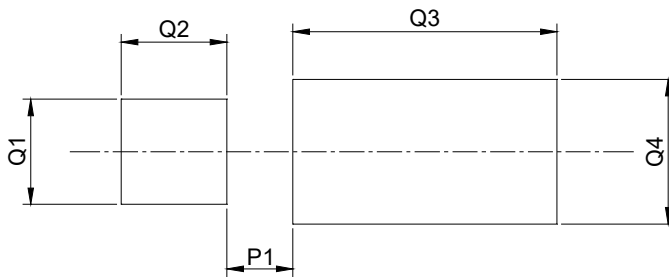
PREFERRED P/N	PACKING CODE	UNIT WEIGHT(g)	MINIMUM PACKAGE(pcs)	OUTER CARTON QUANTITY(pcs)	DELIVERY MODE
FM12E THRU FM120E	F1	Approximate 0.008	3000	120000	7" reel

## Outline Dimensions



SOD-323HE		
Dim	Millimeters	
	Min	Max
A	1.2	1.4
B	2.1	2.3
C	2.3	2.7
D	0.9	1.0
E1	0.55	0.75
E2	1.1	1.5
F1	0.55	0.75
F2	0.78	0.98
G	0.12	0.27

## Suggested pad layout



SOD-323HE	
Dim	Millimeters
P1	0.5
Q1	0.8
Q2	0.8
Q3	2
Q4	1.1



## FM12E THRU FM120E

---

### Disclaimer

The information presented in this document is for reference only. Yangzhou Yangjie Electronic Technology Co., Ltd. reserves the right to make changes without notice for the specification of the products displayed herein to improve reliability, function or design or otherwise.

The product listed herein is designed to be used with ordinary electronic equipment or devices, and not designed to be used with equipment or devices which require high level of reliability and the malfunction of which would directly endanger human life (such as medical instruments, transportation equipment, aerospace machinery, nuclear-reactor controllers, fuel controllers and other safety devices), Yangjie or anyone on its behalf, assumes no responsibility or liability for any damages resulting from such improper use of sale.

This publication supersedes & replaces all information previously supplied. For additional information, please visit our website [http:// www.21yangjie.com](http://www.21yangjie.com) , or consult your nearest Yangjie's sales office for further assistance.